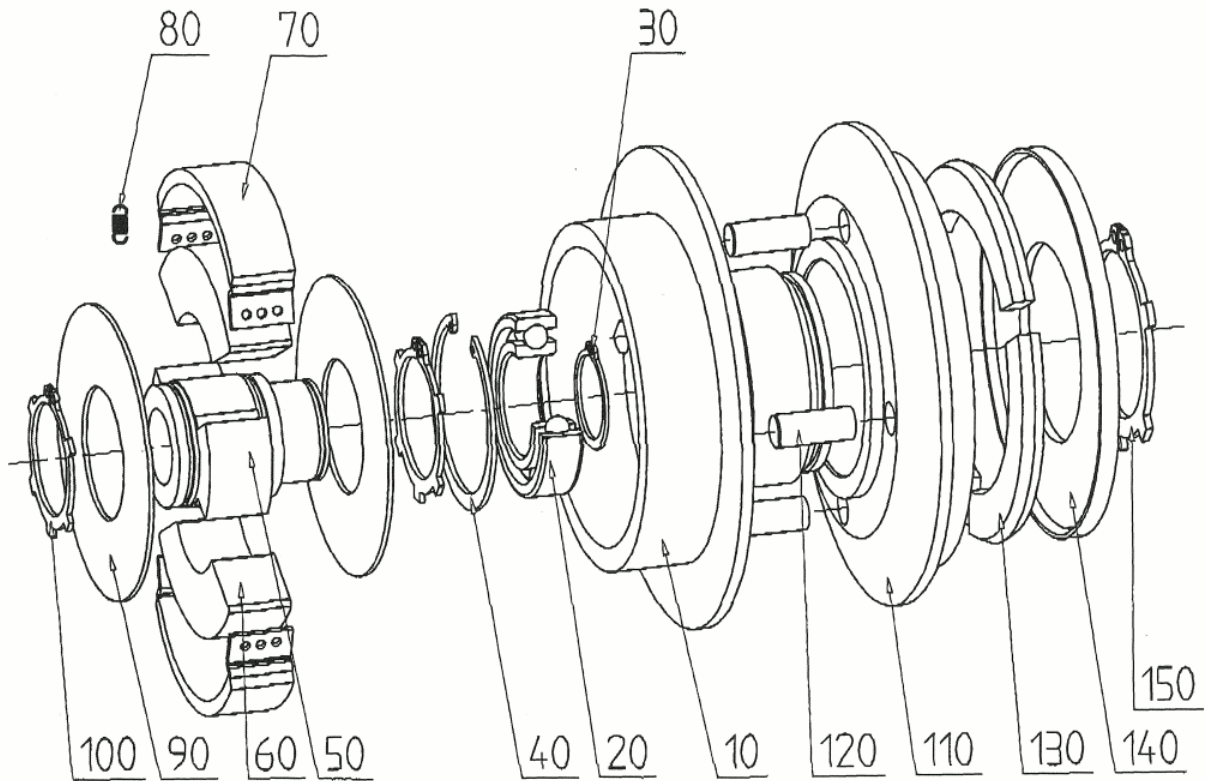


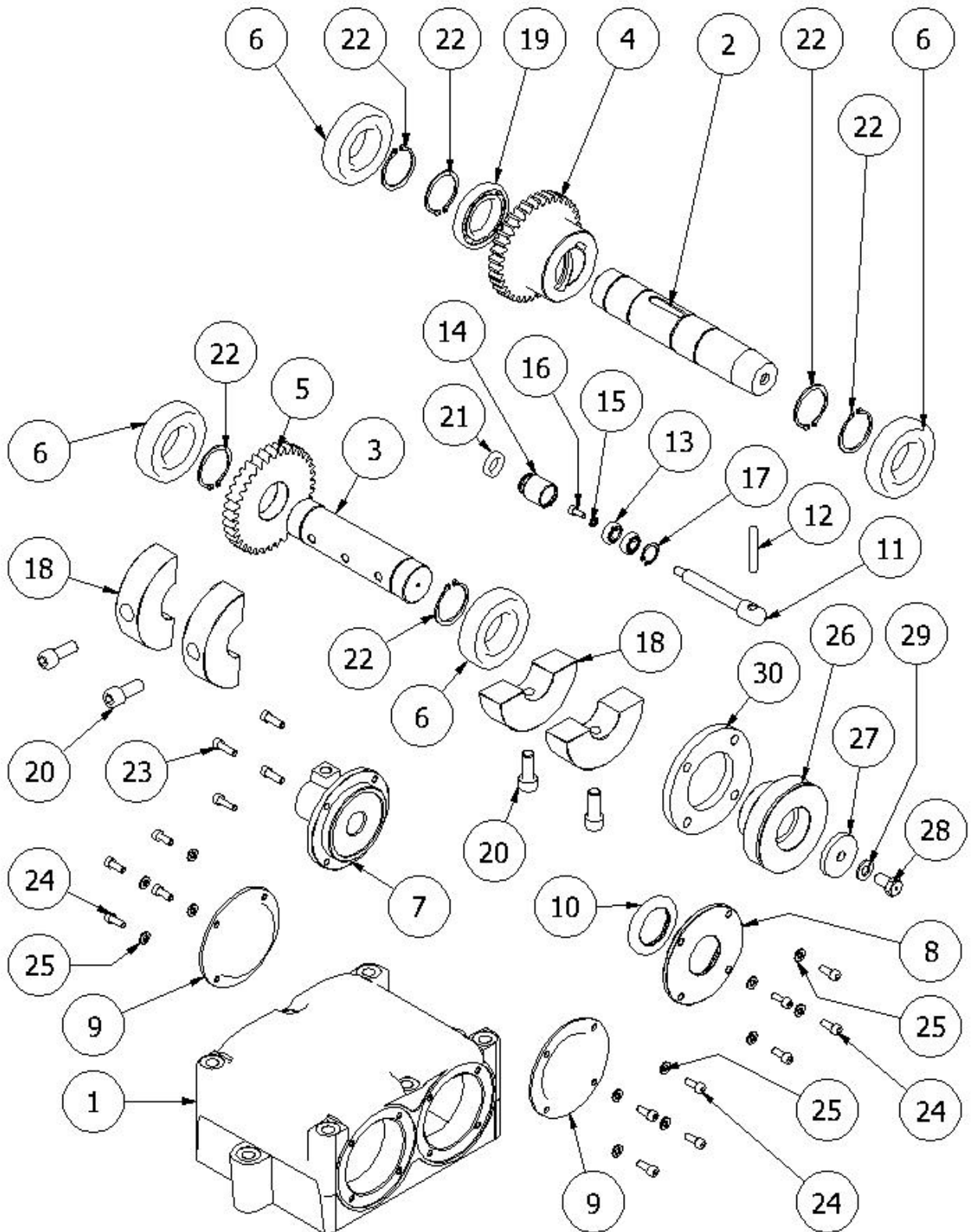
EXPLODED VIEW

CENTRIFUGAL CLUTCH



POS	DESCRIPTION	COD	Q.TY
10	HOUSING		1
20	BALL BEARING		1
30	SEEGER CIRCLIP RING		1
40	SEEGER CIRCLIP RING		1
50	CYLINDRIC HUBE		1
50	CONICAL HUB		1
60	CENTRIFUGAL FLY WEIGHT		2
70	CLUTCH LINING		2
80	SPRING	151994	4
90	COVER DISK		2
100	SEEGER CIRCLIP RING		2
110	PULLEY		1
120	PARALLEL PINS		3
130	CENTRIFUGAL FLY WEIGHT		3
140	COVER PLATE		1
150	SEEGER CIRCLIP RING		1

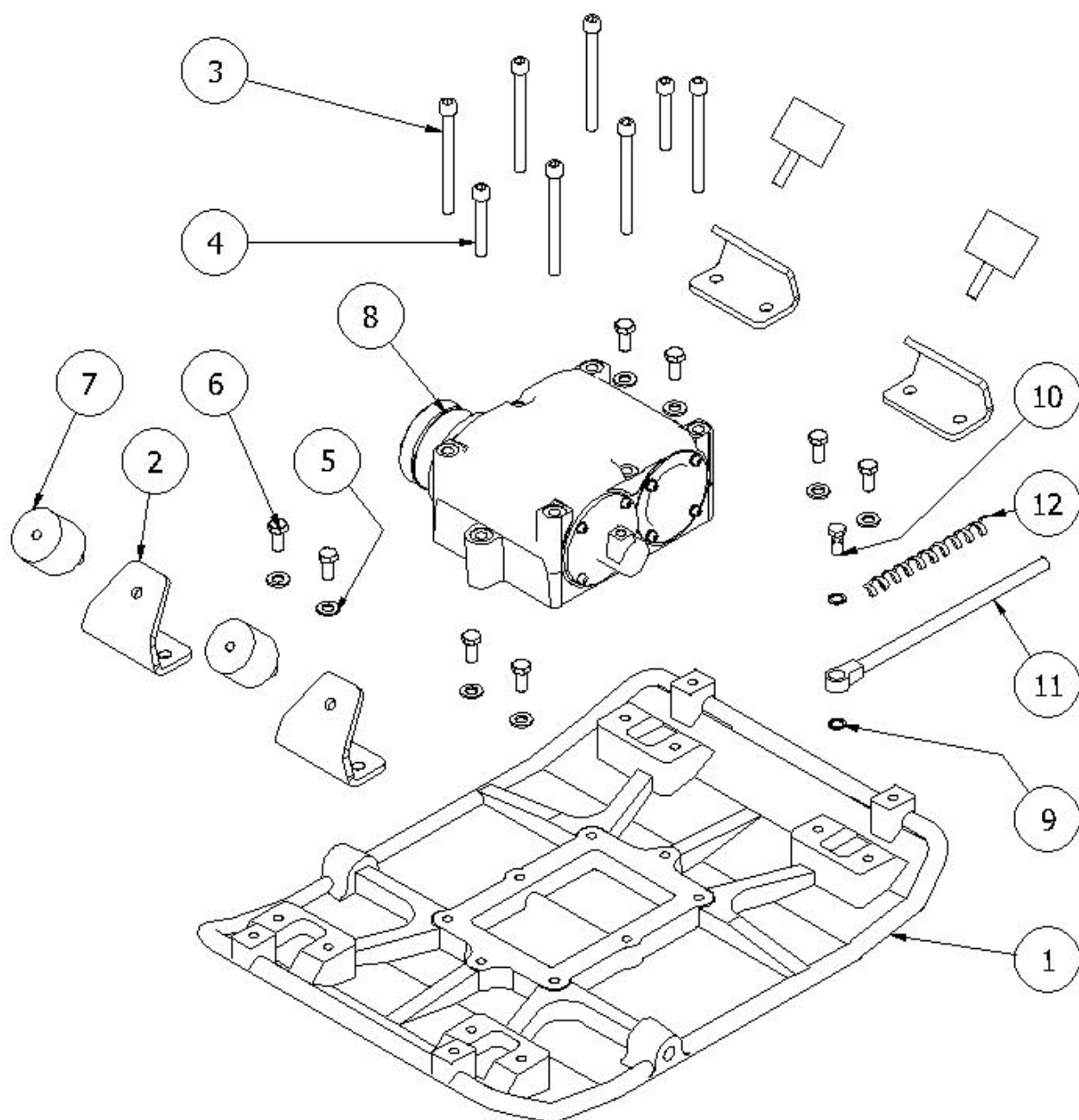
EXCITER



EXCITER

POS	CODE	DESCRIPTION	QTY
1	530027	EXCITER HOUSING	1
2	530905	CONDUCTOR SHAFT	1
3	530741	CONDUCTED SHAFT	1
4	530903	CONDUCTOR GEAR	1
5	530039	CONDUCTED GEAR	1
6	151969	BEARING NJ 208 M C4	4
7	530050	EXCITER CYLINDER	1
8	530054	EXCITER COVER	1
9	530055	EXCITER COVER	2
10	131760	DOUBLE LIP SEAL 40x62x7	1
11	530906	INDEXING BOLT D.18 L.116	1
12	152199	TRIPPING PIN 6325 8x50 RETT.	1
13	151079	BALL BEARING 608 ZZ	2
14	530051	PISTON	1
15	151197	WASHER M 5 UNI 6592	1
16	151299	SCREW TCEI M 5x 12 8.8 UNI 5931	1
17	151222	SEEGER I. 22 UNI 7437	1
18	530041	ECCENTRIC WEIGHT	4
19	151078	BALL BEARING 16008	1
20	151307	SCREW TCEI M12x 30 12.9 UNI 5931	4
21	131093	LIP PACKING NA 25x 17x 5,5 VITON	1
22	152043	SEEGER E. 40 DIN 471	6
23	152136	SCREW TCEI M 6x 20 8.8 UNI 5931 ZN	4
24	151301	SCREW TCEI M 6x 16 8.8 UNI 5931 ZN	12
25	151198	WASHER M 6 UNI 6592 ZN	12
26	530892	EXCITER CLUTCH	1
27	530612	CLUTCH WASHER 45X10.5 SP.6 ZN	1
28	530056	SCREW F. M10x20	1
29	151200	WASHER M10 UNI 6592 ZN	1
30	530144	RUBBER GAGE D.120 SP.10	1

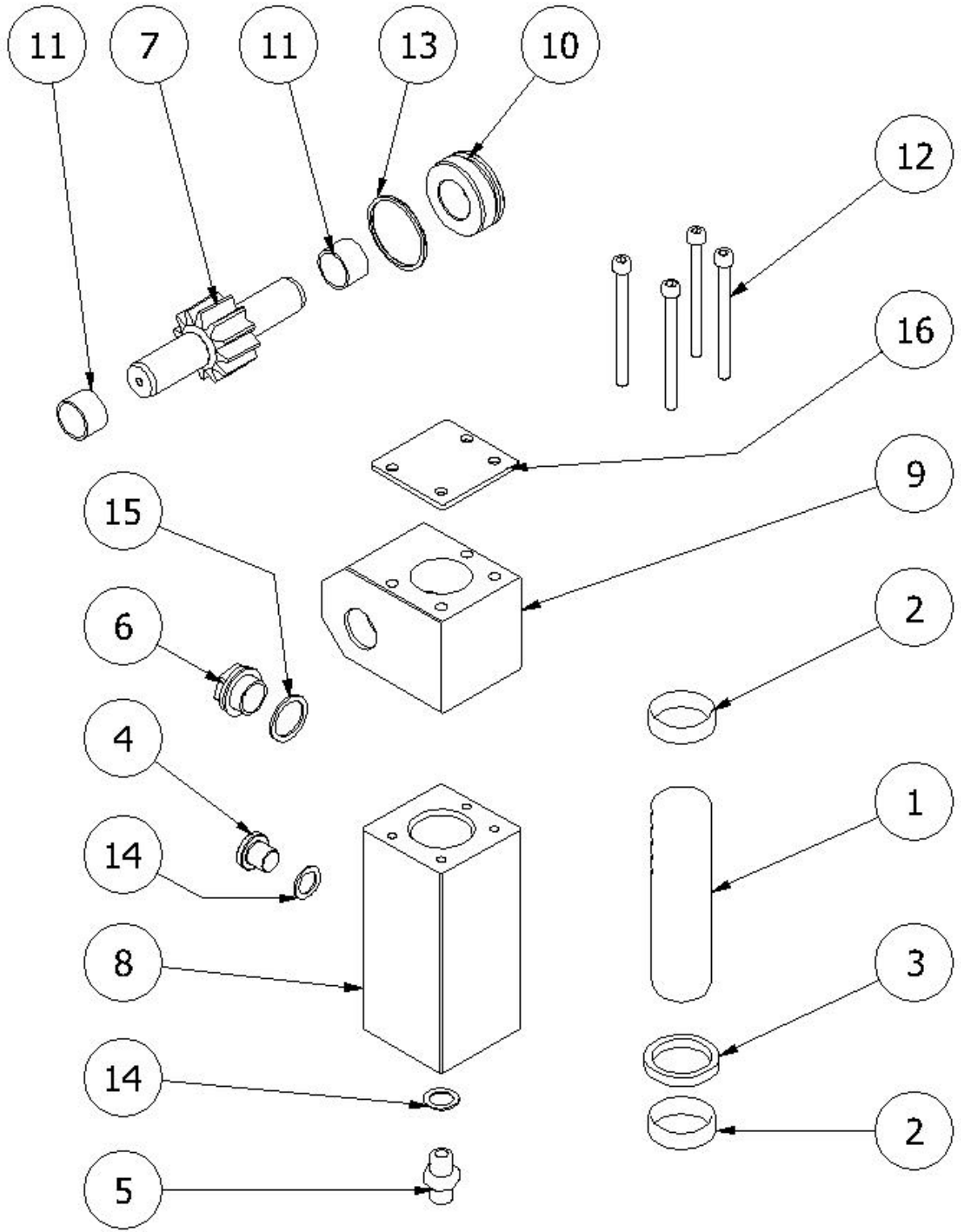
BASE PLATE



BASE PLATE

POS	CODE	DESCRIPTION	QTY
1	530021	BASE PLATE L 500	1
1	530024	BASE PLATE L 650	1
2	530615	SHOCKMOUNT SUPPORT	4
3	151954	SCREW TCEI M12x130 10.9 UNI 5931	6
4	151953	SCREW TCEI M12x 75 10.9 UNI 5931	2
5	151201	WASHER M12 UNI 6592 ZN	8
6	152256	SCREW TE M12x25 10.9 UNI 5739	8
7	131013	SHOCKMOUNT MF D 60x50 M12x40 45-50 SH	4
8	530712	EXCITER ASSY	1
9	151209	COPPER WASHER 1/4"	2
10	151237	BOLT WITH HOLE GAS 1/4"	1
11	131858	HYDRAULIC HOSE	1
12	131785	PLAST. SHEAT D. 16	1

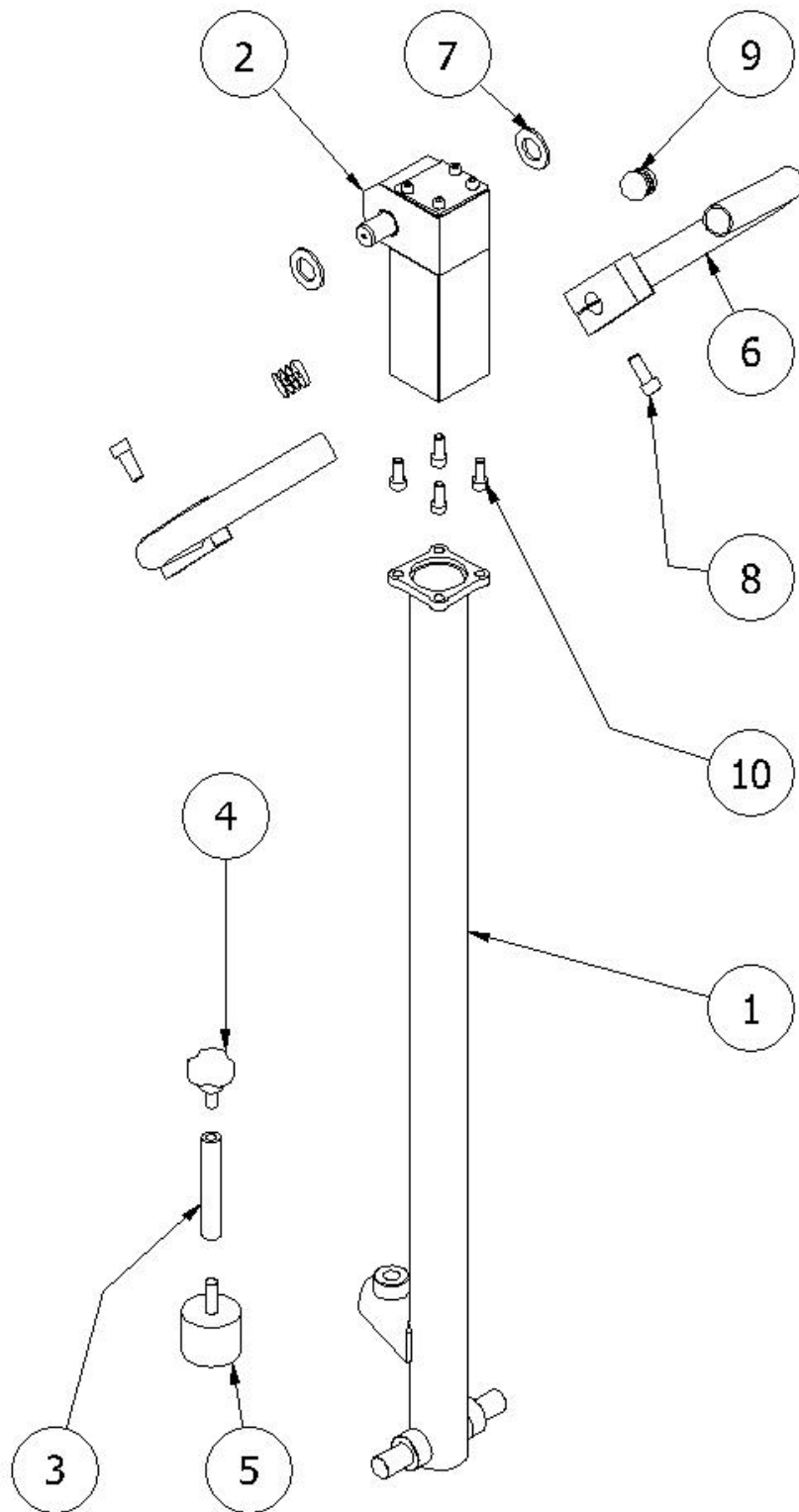
PUMP



PUMP

POS	CODE	DESCRIPTION	QTY
1	530716	GEAR RACK AXLE	1
2	132090	GUIDE RING FI.32	2
3	132057	LIP PACKING SD.32X40X5.8	1
4	152234	OIL CAP C.C.DIN 908 1/4"G	1
5	151137	NIPPLE 1/4"	1
6	151001	OIL LEVEL LED 1/2 GAS HP	1
7	530717	PINION	1
8	530714	PUMP HOUSING	1
9	530715	TOP PUMP HOUSING	1
10	530718	BUSH	1
11	151214	PAP BUSH 20X23X15	2
12	152051	SCREW TCEI UNI 5931 M6X60 ZN	4
13	131060	OR 3150	1
14	151209	COPPER WASHER 1/4"	2
15	151034	COPPER WASHER 1/2"	1
16	531038	PUMP COVER	1

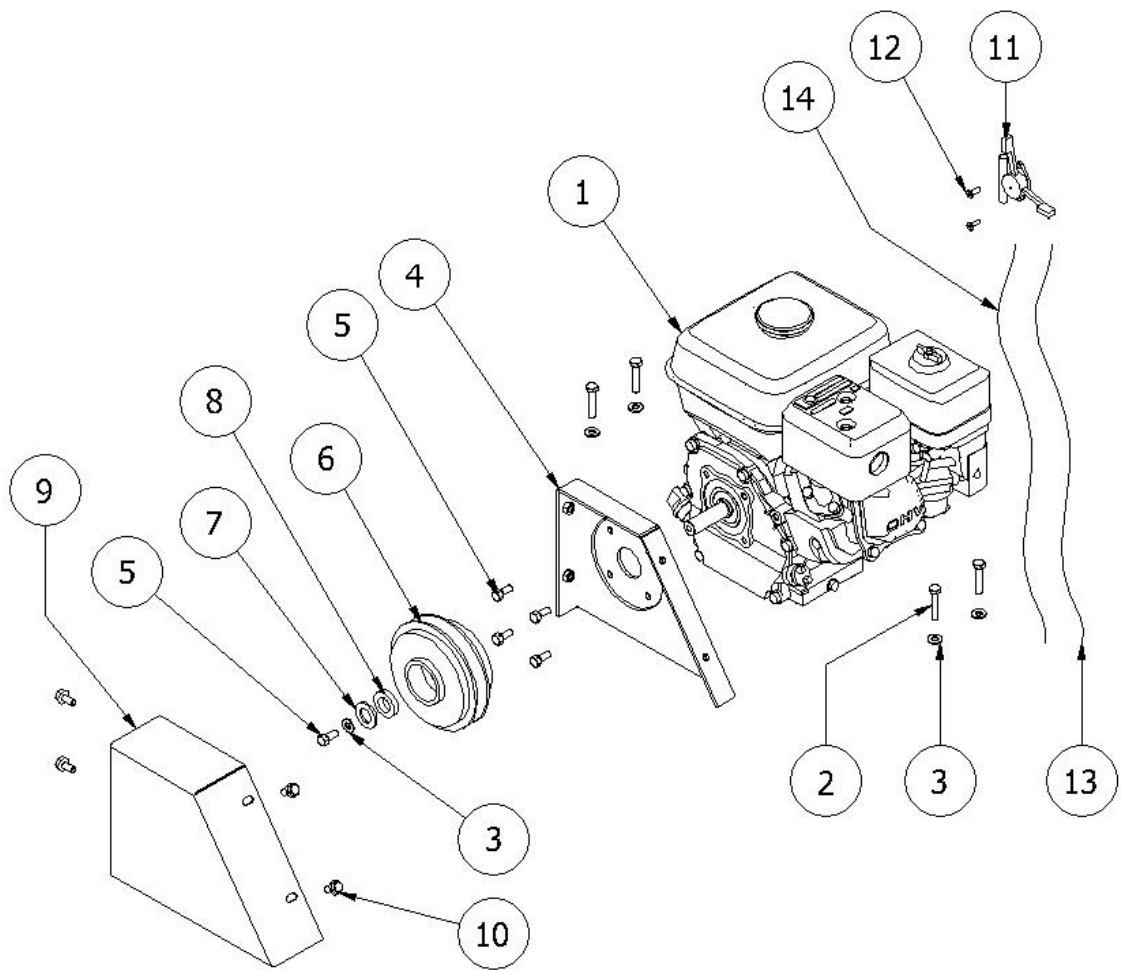
HANDLE



HANDLE

POS	CODE	DESCRIPTION	QTY
1	530720	HANDLE	1
2	530713	PUMP ASSY	1
3	530018	ADJUST WIRE	1
4	131804	HANDLE GRIP D40 M10x20	1
5	131784	SHOCKMOUNT MF D 50x40 M10x30 60 SH	1
6	530130	CONTROL HANDLE	2
7	151963	WASHER M20 UNI 6592	2
8	151831	SCREW TCEI M10x 25 8.8 UNI 5931 ZN	2
9	131244	PLASTIC CAP D25	2
10	151407	SCREW TCEI M 8x 20 8.8 UNI 5931 ZN	4

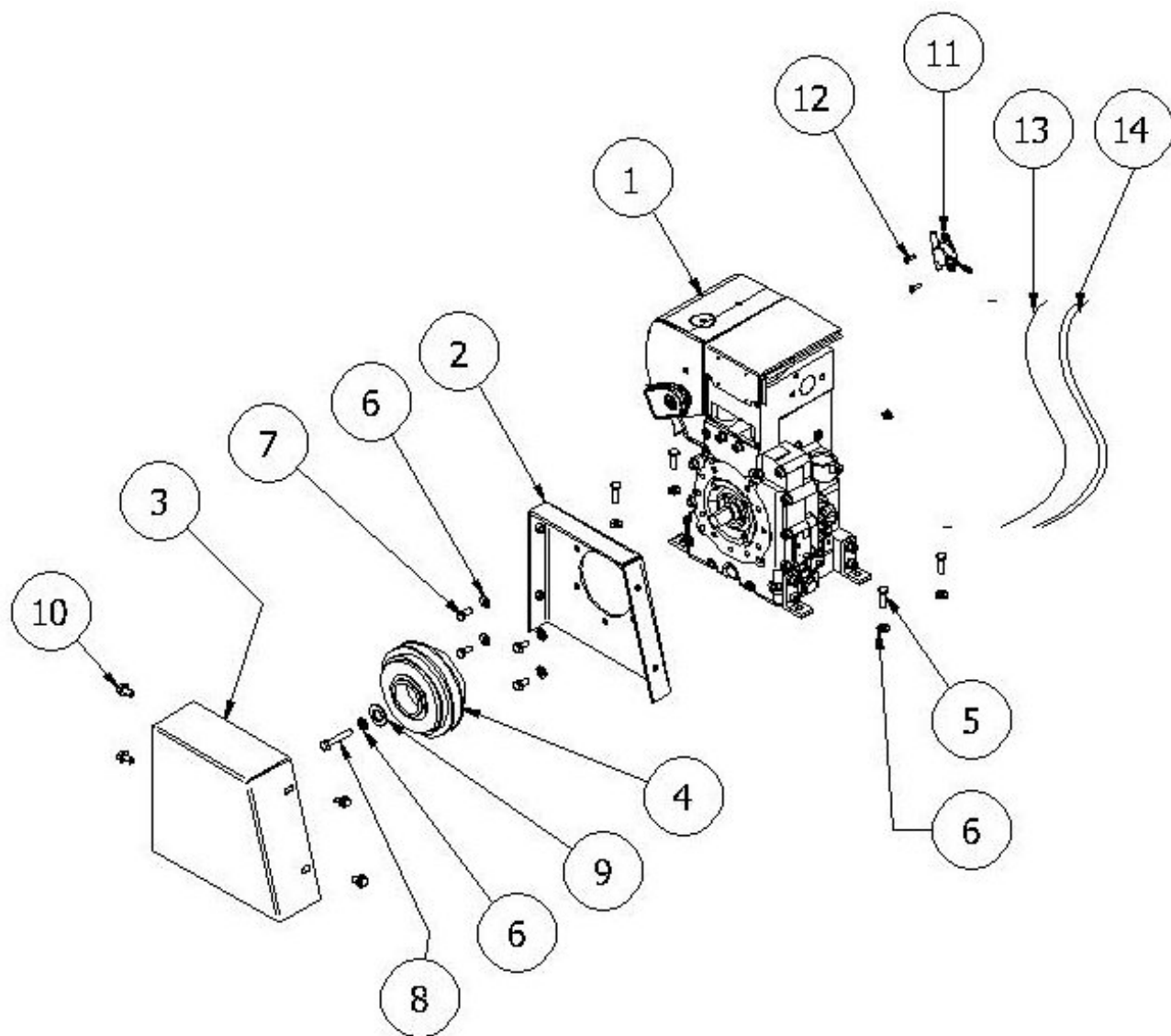
PETROL ENGINE



PETROL ENGINE

POS	CODE	DESCRIPTION	QTY
1	181129	HONDA GX 160 ENGINE	1
1	182217	SUBARU ROBIN EX 17 ENGINE	1
2	152191	SCREW TE M 8x40 8.8 UNI 5737 ZN	4
3	151807	CONTACT WASHER 8(8.2x18x1.4)ZN	5
4	530723	BELT PROTECTION SUPPORT	1
5	151309	SCREW TE 5/16-24x3/4" 8.8 UNF	5
6	152229	CENTRIFUGAL CLUTCH 090-2594	1
7	152049	WASHER M18 UNI 6592 ZN	1
8	560502	CLUTCH THICKNESS	1
9	530724	BELT PROTECTION	1
10	152040	SCREW TE FLG D S/T M 8X16 8.8 ZN	4
11	152279	GAS HANDLE	1
12	152239	SCREW TPSEI M 5x16 10.9 UNI5933 ZN	2
13	560555	SHEATH (cm 30,0+reg. M8x0,75)	1
14	151613	ACCELERATOR WIRE D1,9 ACC. ZN L= 85 cm	1

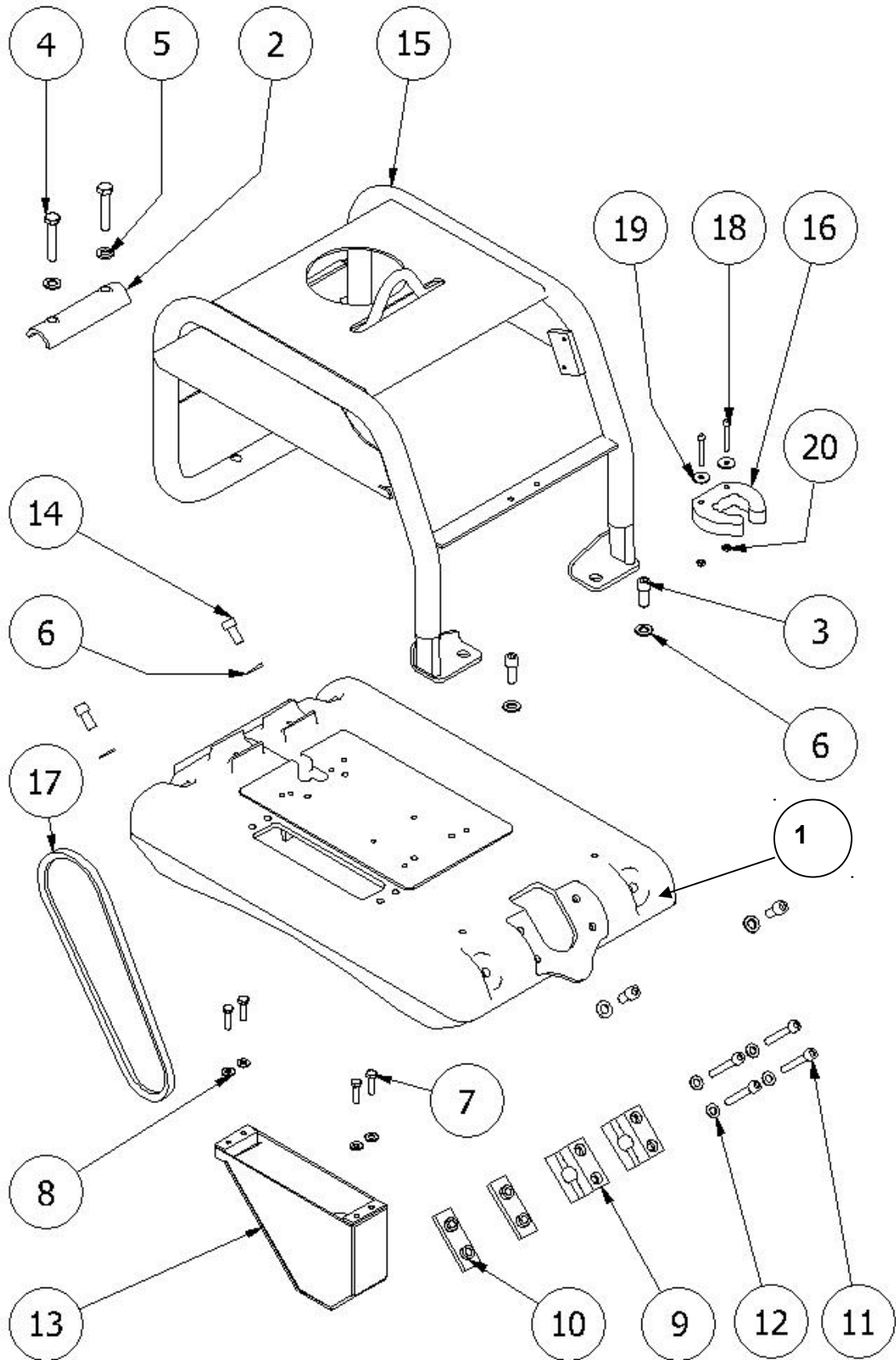
DIESEL ENGINE



DIESEL ENGINE

POS	CODE	DESCRIPTION	QTY
1	181130	HATZ 1B20 ENGINE	1
1	182252	LOMBARDINI 15LD225 ENGINE	1
2	530729	BELT PROTECTION SUPPORT	1
3	530728	BELT PROTECTION	1
4	152228	CENTRIFUGAL CLUTCH 090-2561	1
5	152204	SCREW TE M8X25 UNI5739 8.8 ZN	4
6	151807	WASHER CONTACT 8 ZN	9
7	151310	SCREW TE M 8X16 8.8 UNI 5739 ZN	4
8	152197	SCREW TE M8X50 UNI 5737 8.8	1
9	152049	WASHER M18 UNI 6592 ZN	1
10	152040	SCREW FLG DIN 6921 M8X16 8.8 ZN	4
11	152279	GAS HANDLE	1
12	152239	SCREW TPSEI M 5X16 10.9 UNI5933 ZN	2
13	560556	SHEATH (cm 50,0+reg. M8x0,75+reg.girevole M6)	1
14	151613	ACCELERATOR WIRE D1,9 ACC. ZN L= 85 cm	1

UNDER ENGINE



UNDER ENGINE

POS	CODE	DESCRIPTION	QTY
1	530052	UNDER ENGINE	1
2	530493	ROLLBAR CLAMP	1
3	152011	SCREW TCEI M12x 30 8.8 UNI 5931 ZN	2
4	152202	SCREW TE M12x65 8.8 UNI 5737 ZN	2
5	151201	WASHER M12 UNI 6592 ZN	2
6	151813	CONTACT WASHER 12 (12.4x27x1.8) ZN	6
7	152105	SCREW TE M 8x30 8.8 UNI 5739 ZN	4
8	151807	CONTACT WASHER 8 (8.2x18x1.4) ZN	4
9	131033	COLLAR CP2 D20	2
10	131680	COLLAR PLATE CP2	2
11	151819	SCREW TCEI M10x 70 8.8 UNI 5931 ZN	4
12	151814	CONTACT WASHER 10 (10.2x22x1.6) ZN	4
13	531018	EXCITER BELT PROTECTION	1
14	151306	SCREW TCEI M12x 25 8.8 UNI 5931 ZN	4
15	530721	ROLLBAR PETROL ENGINE	1
15	530745	ROLLBAR DIESEL ENGINE	1
16	531032	HANDLE LOCK	1
17	131988	V BELT HFX XPA 857	1
18	152116	SCREW TCEI M 6x 50 8.8 UNI 5931 ZN	2
19	152072	WASHER M6	2
20	152157	LOCKNUT M 6 DIN 982	2